



ExSolar (A Division of The Exporter Cc.)
PO Box 3643
Somerset West, 7129
South Africa
Tel: +27 (0)21 851 1700
Fax: +27 (0)21 851 1699
Email: energy@exsolar.co.za
Web: www.exsolar.co.za

SOLAR MOUNTING SYSTEMS



Module clamps for framed modules

- Module clamps for fit majority of modules. Alum module end clamps for framed modules.
- Optimum holding force in the critical edge zones of the plant.
- Module middle clamps, length 100mm, clamping depth 3mm.
- Optimal distribution of clamping pressure along the module frame.
- Gap between modules: approx. 20mm.

System Rapid aluminium module clamps2+ assembled incl. screws for Torx M8 wrench with under head serration and anti-friction coating.

End clamp universal

40-50mm

Part no: 131002-001

30-39mm

Part no: 131002-000



Middle clamp (grounding)

40-50mm

Part no: 131003-001

30-39mm

Part no: 131003-000



Standard profiles and accessories

Profile series 05

The profile series 05 for the proven Klick system with compatible accessories. Assembly with square nuts, Klicksystem and Rapid2+ c.f. also structural analysis tables for cross beams.

Module bearing profile Eco05 4m

Mechanical connection:

Top: Klick groove M8

Bottom: Screw channel M10

Part no: 120001-004



Module-bearing profile SoloLight 4m

Mechanical connection:

Top: Klick groove M8

Bottom: Screw channel M10

Cannot be combined with 129009-xxx

Part no: 120005-004



U-connector Eco05, complete

Part no: 129001-002



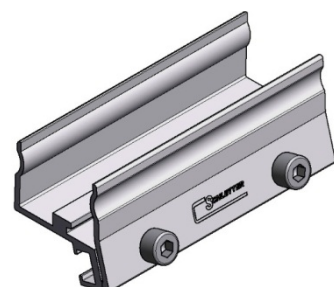
Connector Solo or Profi Plus, loose

Part no: 129002-000



Connector E Solo, SoloLight or Profi Plus, pre-assembled

Part no: 129002-002



Fastening elements

Corrugated roof

Dual corrugated roof fastening kit incl. mounting plate, 2 hanger bolts with vulcanized EPDM-seals (UV-resistant) and 6 flange nuts, suitable for fibre cement plates or "Berliner Welle" 133 / 177mm.

Mounting plate for hanger bolt M10 / M12

Loose, aluminium 120x60x6mm / 4.72x2.36x0.24inches
Part no: 119002-000



KlickTop attachment for hanger bolt

For hanger bolts M10 / M12, loose, aluminium
Part no: 119001-000



Area of application:

Fastening of solar and photovoltaic plants to the substructure of corrugated eternit roofs or trapezoidal sheet metal roofs.

Technical data:

Material Bolts: High-grade steel 1.4301

Mounting plate / KlickTop attachment: Aluminium

Rubber seal: vulcanized EPDM-seal (UV-resistant)

Hanger bolt kit

Accessory product to facilitate the application of hanger bolts on shingle roofing 12x200 mounted M12x200 mm

Fail-safe and simple assembly

Application of quality materials (VA 1.4301 and EPDM)

Designed for roof-parallel application and for tilted systems in combination with hanger bolts.

Direct and therefore tight connection to the roof substructure

Part no: MT-OFF SCREW 110012-200



Roof Hook Universal (Klick Top)

- All roof hooks are of quality steel
- Adjustable hooks are fully pre-assembled
- VA-quality
- Variable bar arrangement
- Adjustable at front and rear
- Middle bar can be set in three different positions

Part no: 100001-001



Area of application:

Fastening of solar and photovoltaic plants to the substructure of tiled roofs.

Technical data:

Material Roof hooks and bolts: High-grade steel 1.4301

Distance pieces, compensating plates, KlickTop and Rapid profile clamping.

Statics:

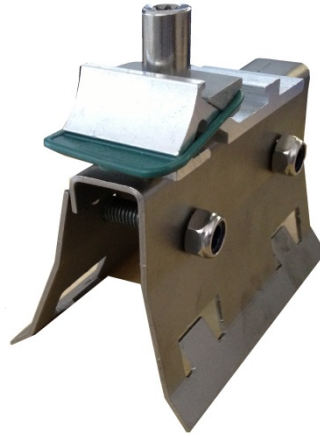
Structural analysis in accordance with current national standards (in Germany DIN1055 and EC1). Structural analysis appendices for dimensioning the number of required fastening points, based on structural calculations and evidence drawn from tensile tests. Please ensure you observe the structural analysis information for each case. Verification for adhesive

forces of a roof to the substructure is not included in any of the general structural analysis appendices! Aluminium components: High-grade steel 1.4301

Standing seam clamps

Seam clamp RC for RiverClack

for RiverClack and similar
Part no: 112010-000



KlickTop cross connector kit M8

With bolt, Klick and square nut for
Klick groove M8 for cross rail systems
Part no: 129004-000



System VarioFix

The universal fastening for trapezoidal sheet metal roofs for steel- and alu sheeting from 0.5mm / 0.02inches; Instructions for use should be carefully observed!

SingleFix-V Solo pair kit

For use with e.g. assembly rail Solo
Part no: 113009-000



Fastening element FixPlan

FixPlan sealing mat

The alternative for smooth sheet metal roofs, i.e. with no standing seam to provide a base for fastening (e.g. titanium zinc metal roofs).

Part no: 114003-000



Standing seam clamp 503 standing seam roof VA

For standard seam roofs

Please note: with Titanium sheeting please verify that the standing seams can withstand loading!

Part no: 112001-000



Standing seam roof seam clamp for Klicklock

Part no: 112001-001



Seam clamp Zambelli RibRoof465 KlickTop

Part no: 112003-002

Area of application:

For fastening of solar plants and PV-plants to sheet metal roofs and to bitumen roofs.

Important information on structural safety:

- A sufficient holding force of the metal sheet to the substructure is prerequisite when mounting an assembly on the roof cladding. Please note that this verification must be provided by the customer!
- Sheet metal is particularly prone to stress in elevated plants. Please ensure a sufficient number of fastening points and provide proof of the holding capacity of the roof covering.
- The verified holding force of the standing seam clamp on the roof can be taken from the respective system structural analysis.
- Take into account the additional stress at roof edges and in the corner zones, or avoid these areas altogether when planning the plant assembly.
- The self-weight of the PV plant must be added to the snow load in order to calculate the maximal load incurred on the roof covering.

Technical data: Material: Bolts: High-grade steel 1.4301; Profiles: EN AW 6063 T66 / AlMgSi0.5 ; Sheet metal components: High-grade steel 1.4302

Schletter Mounting Systems Retail Pricing

CODE	DESCRIPT	UsePriceExcl	UsePriceIncl
MT-100001-001	Mount Roof Hook Universal KlickTop	R299.13	R344
MT-112001-000	Mount Seam clamp standing 503 for Klicktop roof	R180.87	R208
MT-112001-001	Mount Seam clamp standing for Klicktop roof	R140.87	R162
MT-112003-002	Mount Seam Clamp Zame (BrownRoof)	R152.17	R175
MT-112010-000	Mount Seamclamp for Cliplock roof (complete)	R211.3	R243
MT-113009-000	Mount SingleFix-V Solo	R45.22	R52
MT-114003-000	Mount FixPlan sealing plate	R99.13	R114
MT-119001-000	Mount KlickTop attachment for hanger bolt	R49.57	R57
MT-119002-000	Mounting plate for hanger bolt M10/M12	R39.13	R45
MT-120001-004	Mount Module bearing profile ECO05 - 4m	R398.26	R458
MT-1250005-062	Mount Module bearing profile SoloLight - 6.2m	R746.09	R858
MT-129001-002	Mount U-Connector Eco05, Complete	R74.78	R86
MT-129002-002	Mount Connector Solo/ProfiPlus PreAssembled	R74.78	R86
MT-129004-000	Mount KlickTop cross connector kit M8	R49.57	R57
MT-129011-000	Mount Plastic End-Cap Solar Profile	R12.17	R14
MT-131002-000	Mount End Clamp 30-39 mm	R61.74	R71
MT-131002-001	Mount End Clamp 40-50 mm	R61.74	R71
MT-131003-000	Mount Middle Clamp 30-39 mm	R49.57	R57
MT-131003-001	Mount Middle Clamp 40-50mm	R49.57	R57
MT-166501-006	AluGrid Continuous Beam 6000mm Base Rails	R730.43	R840

Updated Oct 2018